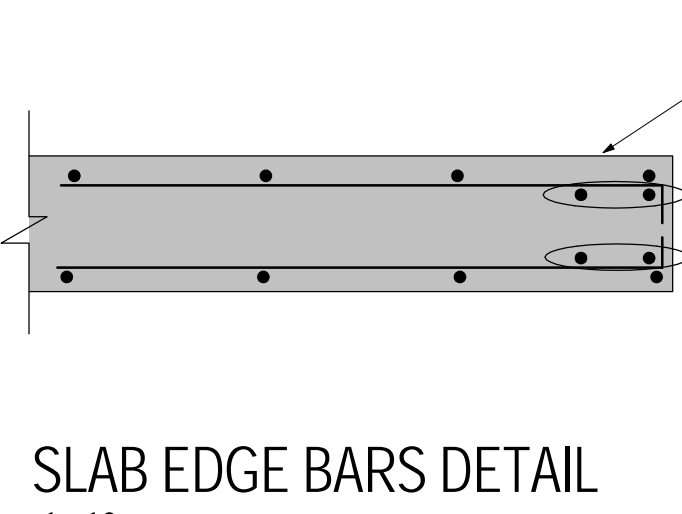
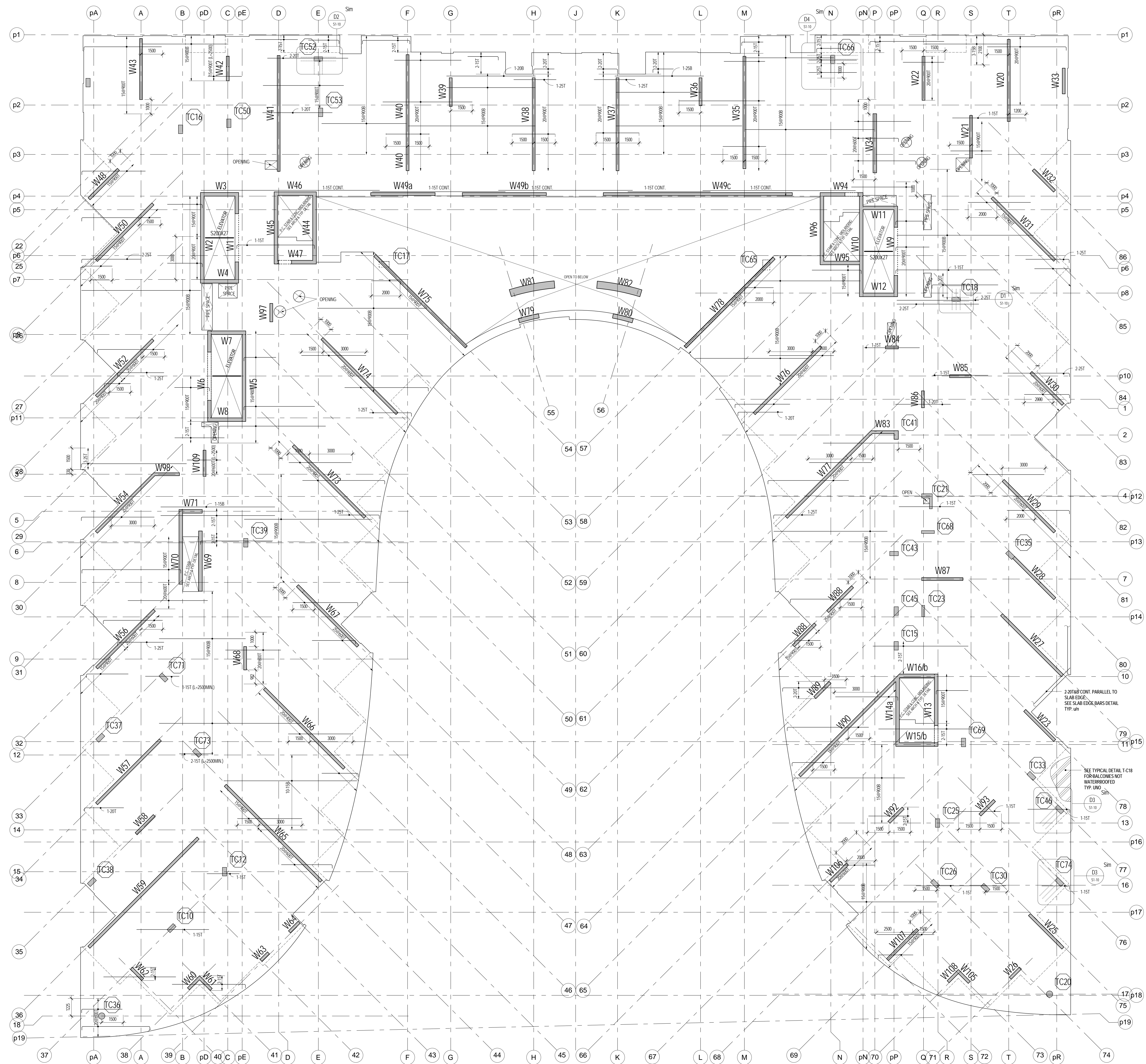
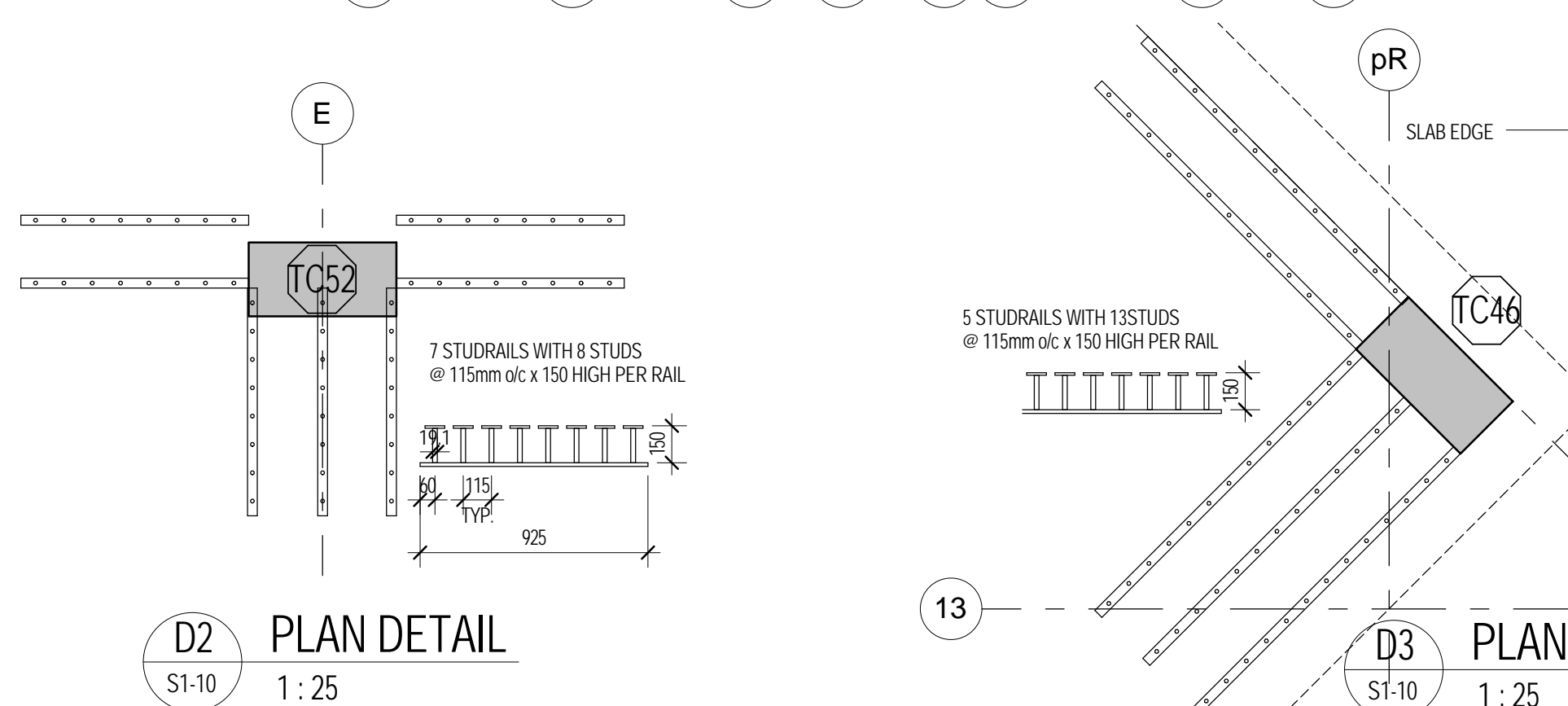
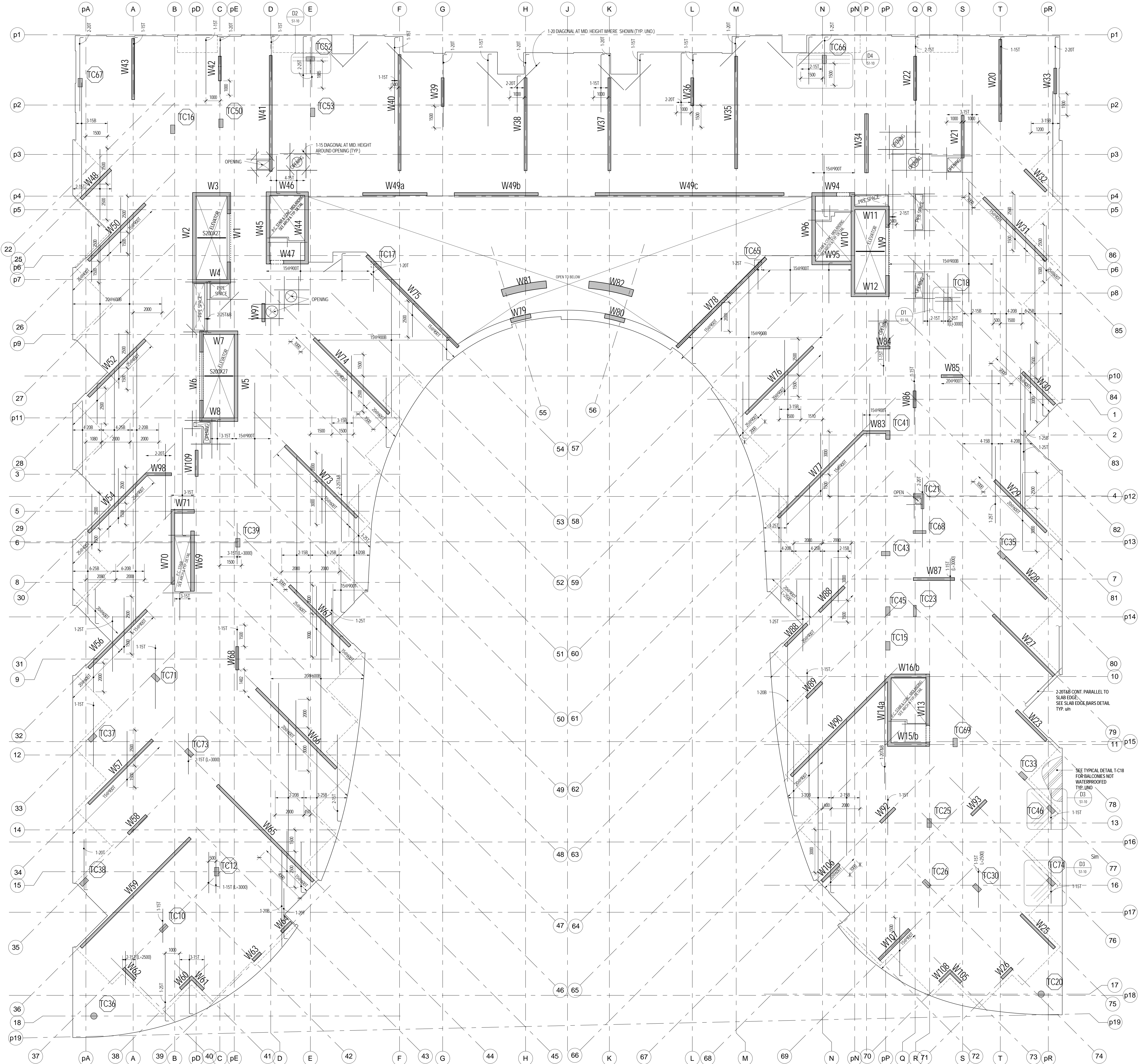


LEVEL 3 FRAMING PLAN - WITH BUL AND TLL
1:100

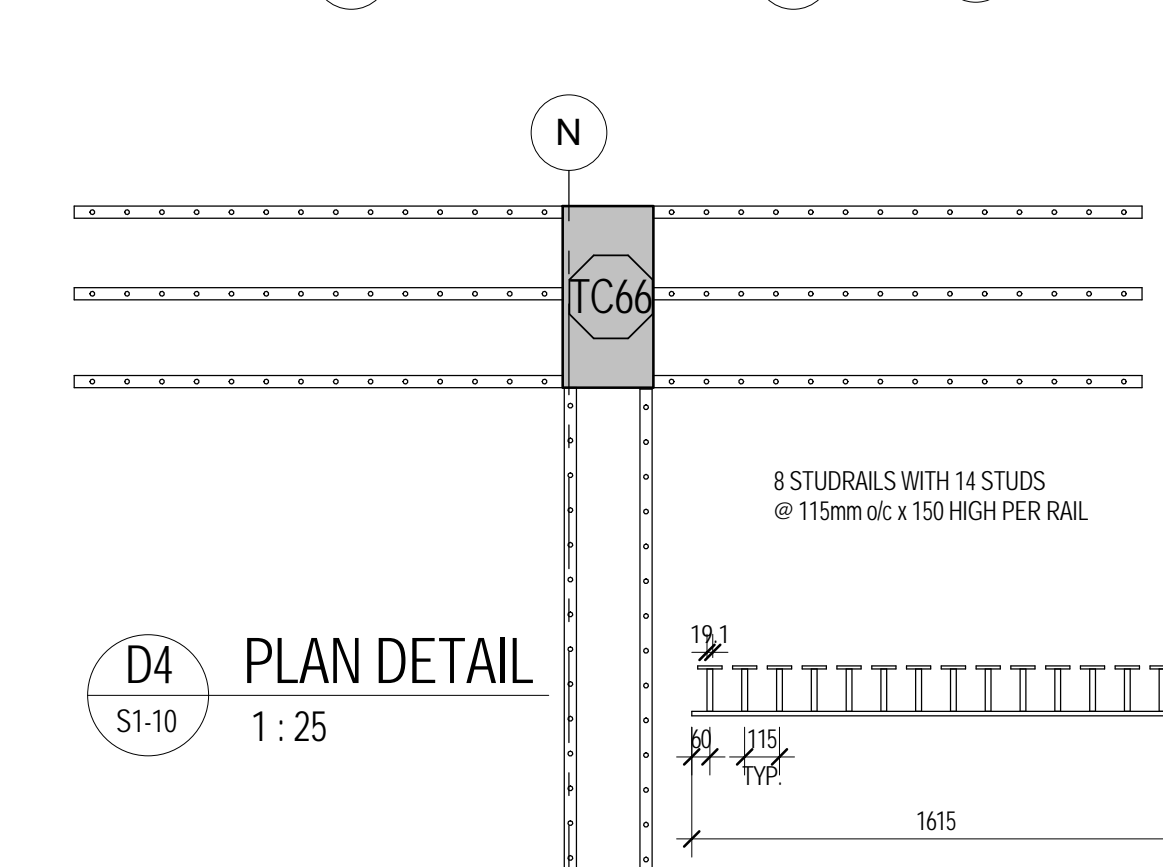


D1 PLAN DETAIL
1:25

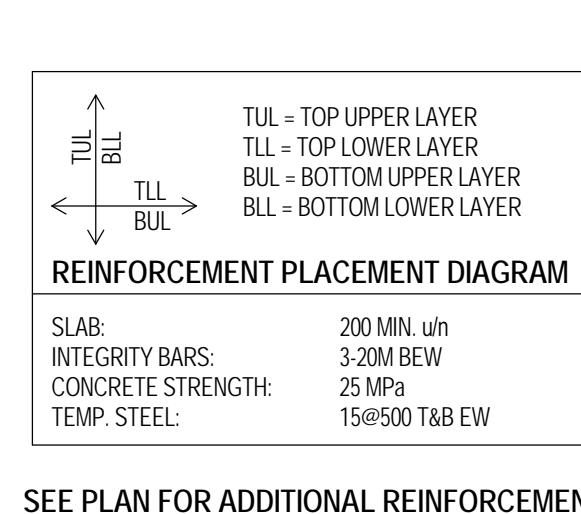
LEVEL 3 FRAMING PLAN WITH - BLL AND TUL
1:100



D2 PLAN DETAIL
1:25



D3 PLAN DETAIL
1:25



- NOTES:
- TOP OF STRUCTURAL SLAB TO BE 60 mm BELOW FINISHED FLOOR DATUM ELEVATION EXCEPT AS CROSSED AND NOTED. SEE ARCHITECTURAL DRAWINGS FOR DATUM ELEVATION.
 - THE STRUCTURAL SLAB IS REINFORCED FOR THE FOLLOWING LOADS (ALL UNITS IN KILONEWTONS PER SQUARE METRE):
 - LL - 1.50
 - SL - 1.25
 - TL - 1.00
 - TL - 0.75
 - TL - 0.50
 - TL - 0.25
 - TL - 0.10
 - TL - 0.05
 - TL - 0.02
 - TL - 0.01
 - ALL ALLOWANCES FOR SHOWN LOADS OF 1.5 MPa ARE BEING CONSIDERED.
 - CONCRETE COVER FOR TOP AND BOTTOM BARS SHALL BE 25 mm.
 - APPROVAL MUST BE OBTAINED FROM ENGINEER FOR ALL OPENINGS OTHER THAN THOSE SHOWN ON THIS PLAN.
 - THE REINFORCING BARS MUST BE PLACED IN ACCORDANCE WITH THE FOLLOWING: SEE PLAN AND COLUMN SCHEDULES, WALL ELEVATIONS, AND OPENINGS. IN ADDITION TO REINFORCEMENT SHOWN ON PLAN, PROVIDE REINFORCEMENT FOR ALL OPENINGS.
 - REINFORCEMENT FOR ALL OPENINGS SHALL BE PROVIDED BY REINFORCING BARS TO 200 mm SLAB EDGE. SEE SCHEDULE BARS FOR THE.